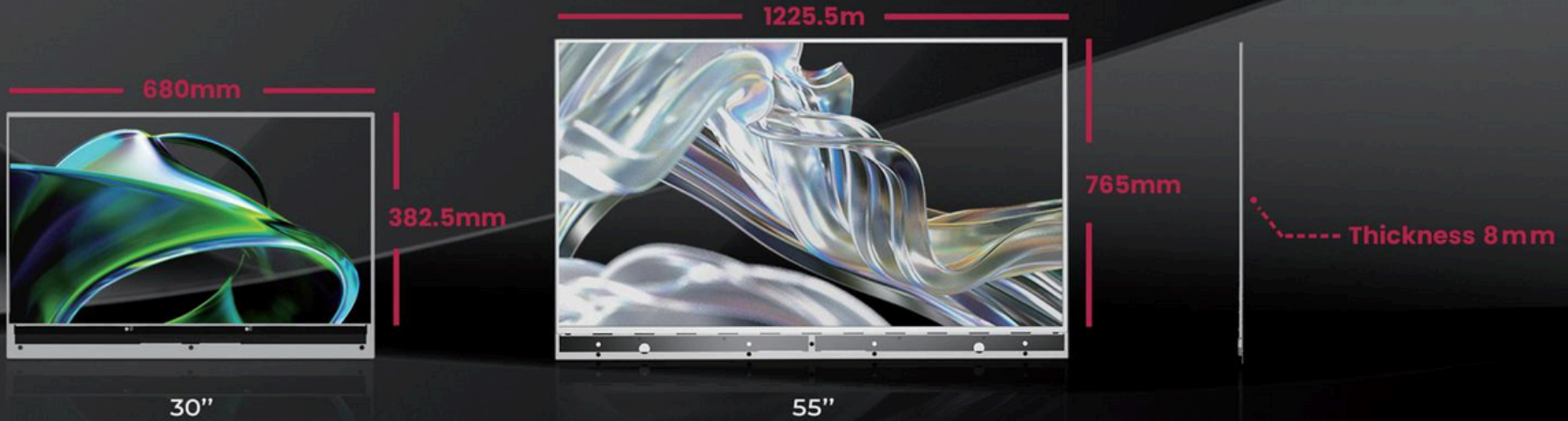


# FOTOVECI



**OLED catalog.**

# FOTOVECI



**Magic of Transparent OLED Module,  
can't be thinner..**

# Multiple styles of OLED-T covering multiple fields.



FTVC-O55-LTP6-AI



FTVC-O55-LTP6-ART



FTVC-O55-LTPA



FTVC-O30-LTP6-K



FTVC-O55-PTG6-1X



FTVC-O55-STP6



FTVC-O55-LTP6

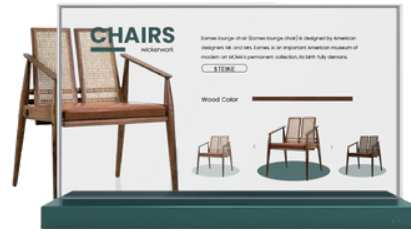


FTVC-O55-PTG6-2X

For more product models, please contact the FOTOVECI sales team



FTVC-O55-ZTP2-Y



FTVC-O30-QTP6



FTVC-OD55-TGS5



FTVC-O30-STP6



FTVC-O55-WTG2



FTVC-O30-LTGA



FTVC-O48-LTGA



FTVC-O30-LTGA

For more product models, please contact the FOTOVECI sales team



FTVC-O48-QTP6



FTVC-O77-QTGA



FTVC-O30-ZTP6



FTVC-O55-QTP6



FTVC-O30-LTPX



FTVC-030-MTP6  
FTVC-055-MTP6



FTVC-L21-MZXX

More products to come ...

# Showcase.



# Showcase.



# Showroom.





# OLED value.

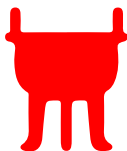
**Enterprise Exhibition**



**Retail**



**Museum**



**Rail Transit**



**At Home**



**OLED-T value**

The openness of the office environment

Touchable interaction, providing more information

Spatial openness

Catch consumers' attention  
Enhance brand image

Innovative Digital Experience

Deliver Information

The screen provides effective content

Open a new chapter of future travel

Reflecting a high-end decorative effect

As a part of decoration, the smart wall can save space.

**Usage Scenario**

**Office**  
Conference room  
Exhibition hall

**Department store**  
Shopping center  
Retail store \ 4S store

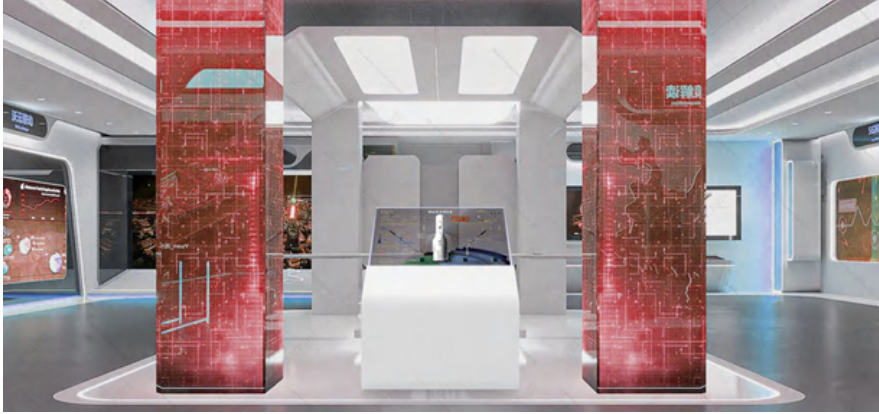
**Museums**  
Art Galleries

**Subway Car Window**  
Metro Automatic Door

**Transparent display**  
Smart home communication terminal

# Enterprise exhibition.

Improve the office space, enhance the product display effect and corporate image



# Retail.

Maintain a sense of open space, Attract consumers attention Enhance brand image through high-end decoration



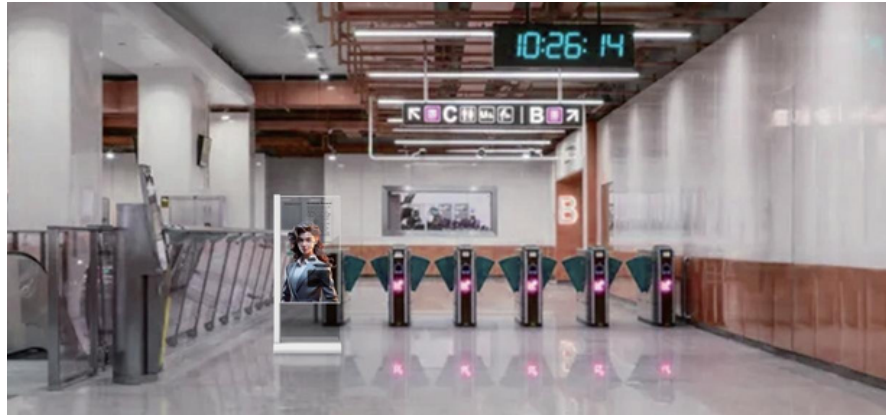
# Museum.

Improve the audiences participation and sense of experience, adding technological content and attractiveness to the museum



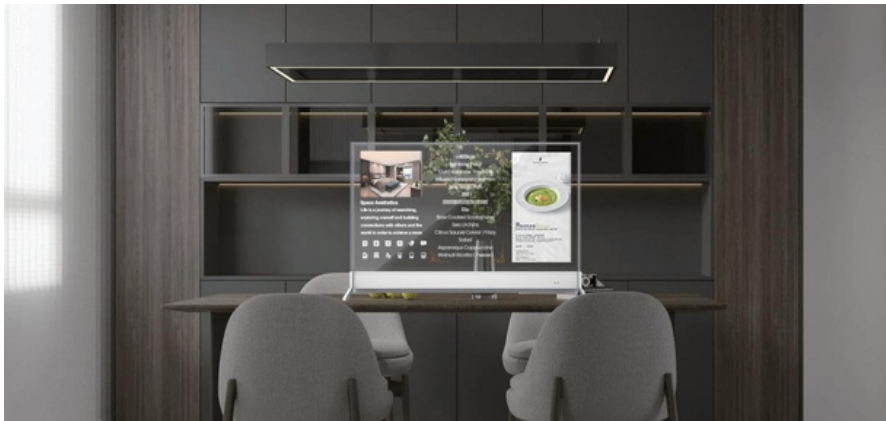
# Transit.

Transparent window screen, opening a new chapter in travel



# At home.

OLED transparent screens will decorate the home with a sense of luxury and enhance the value of the building



# F O T O V E C I

## FTVC-O55-LTP6-AI 55-inch AI Touch Transparent OLED Totem

---

- ▶ *55" Size*
  - ▶ *Full HD Resolution (1920 x 1080)*
  - ▶ *43% light transmissivity*
  - ▶ *Dual-Column Stand Design for Stability and Style*  
*Ultra-Narrow Bezel for Seamless Visual Experience*
- 



### Product Highlights.

The "55-inch AI Touch Transparent OLED Totem" (Model: O55-LTP6-AI) is a cutting-edge display solution that combines the latest in transparent OLED technology with artificial intelligence, offering a truly interactive and futuristic experience. This display is designed to captivate users with its intelligent interaction capabilities and sleek aesthetic, making it a perfect fit for high-end retail spaces, interactive exhibitions, and smart office environments. Let's delve into the detailed selling points that make this product stand out.



# F O T O V E C i

## Specifications

<b>Model</b>	O55-LTP6-AI
<b>Size</b>	55"
<b>Display Resolution</b>	Full HD (1920 x 1080)
<b>Max Luminance</b>	600 cd/m <sup>2</sup>
<b>Basic Display Interface</b>	HDMI x1, Display Port x1
<b>Touch Option</b>	Capacitive touch, RS-232, USB
<b>Transmissivity</b>	43%
<b>Viewing Angle(typical)</b>	178° H,V
<b>Contrast Ratio(typical)</b>	>10 0 k :1
<b>Response Time(typical)</b>	<1 ms
<b>Palette</b>	1.073 billion colors (10-bit)
<b>Product size</b>	724 * 1809 * 60 (mm)
<b>Weight(package)</b>	45kg/66 kg 99 lbs/ 145.2 lbs
<b>Power Requirements</b>	100 to 240V AC
<b>Power Consumption</b>	<190W



# FOTOVECI

## FTVC-O55-LTP6-ART 55-Inch Transparent OLED Art Display

- ▶ *55" Size*
- ▶ *Full HD Resolution (1920 x 1080)*
- ▶ *43% light transmissivity*
- ▶ *Exclusive for High-End Art Exhibitions*
- ▶ *Floor standing*



### Product Highlights.

Exclusive for High-End Art Exhibitions: The O55-LTP6-ART is designed with the elite art world in mind. Its superior image quality and unique display capabilities make it an ideal choice for showcasing artworks. The vivid clarity and true-to-life color representation of this display ensure that each piece of art is presented in its full glory, captivating the viewers and elevating the overall Product Highlights exhibition experience.



# F O T O V E C i

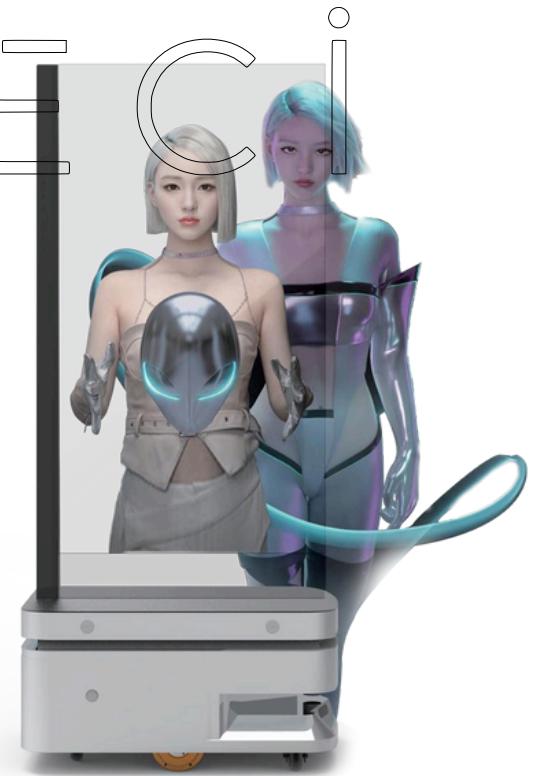
## Specifications

Model	O55-LTP6-ART
Size	55"
Display Resolution	Full HD (1920 x 1080)
Max Luminance	600 cd/m <sup>2</sup>
Basic Display Interface	HDMI x1, Display Port x1
Touch Option	Capacitive touch, RS-232, USB
Transmissivity	43%
Viewing Angle (typical)	178° H,V
Contrast Ratio (typical)	>10 0 k :1
Response Time (typical)	<1 ms
Palette	1.073 billion colors (10-bit)
Product size	1781*772*361 (mm)
Weight (package)	71/90 kg 156.2lbs/198lbs
Power Requirements	100 to 240V AC
Power Consumption	<190W

# FOTOVECI

## FTVC-O55-LTPA T-OLED Navigator

- 
- ▶ *55" Size(FHD)*
  - ▶ *8-Hour Battery Life*
  - ▶ *43% light transmissivity*
  - ▶ *600 cd/m<sup>2</sup> High-Brightness OLED Screen*
  - ▶ *Automatic obstacle avoidance*
  - ▶ *Route planning*
- 



### **Product Highlights.**

1. "Smart Robot Integrated with Transparent OLED Technology" - Combines advanced robotics with a transparent OLED display, offering an innovative visual experience. 2. "8-Hour Battery Life" - Ensures prolonged operational capability with an extended 8-hour battery life, supporting continuous use throughout the day. 3. "Automatic Return-to-Base Charging" - Features intelligent self-navigation back to the charging station, ensuring the device is always ready for use.



# F O T O V E C i

## Specifications

Model	O55-LTPA
<i>Size</i>	55"
<i>Display Resolution</i>	Full HD (1920 x 1080)
<i>Max Luminance</i>	600 cd/m <sup>2</sup>
<i>Basic Display Interface</i>	HDMI x1, Display Port x1
<i>Touch Option</i>	Capacitive touch, RS-232, USB, LAN
<i>Transmissivity</i>	43%
<i>Viewing Angle (typical)</i>	178° H,V
<i>Contrast Ratio (typical)</i>	>10 0 k :1
<i>Response Time (typical)</i>	<1 ms
<i>Product size</i>	1775 * 770 * 572 (mm)
<i>Battery Life</i>	6-8hours
<i>Weight (package)</i>	113.5kg ( 249.7 lbs)
<i>Power Requirements</i>	100 to 240V AC
<i>Power Consumption</i>	<260W

# F O T O V E C I

## FTVC-O30-LTP6-K 30inch Touch Transparent OLED Kiosk

- ▶ *30" Size Resolution (1366 x 768) 43% light transmissivity*
- ▶ *EU Design Patent Certified from March 2024*
- ▶ *G+F+F*



### **Product Highlights.**

1.Sleek Curved All-Glass Design - The product features an elegant, all-glass body with a smooth, curved design, offering a modern and sophisticated aesthetic. 2.EU Design Patent Certified- The product's unique appearance and design are protected under an EU design patent, ensuring its exclusivity and Product Highlights innovation in the market.



# F O T O V E C i

## Specifications

<b>Model</b>	O30-LTP6-K
<b>Size</b>	30"
<b>Display Resolution</b>	1366 x 768
<b>Max Luminance</b>	600 cd/m <sup>2</sup>
<b>Basic Display Interface</b>	HDMI x1, Display Port x1
<b>Touch Option</b>	Capacitive touch, RS-232, USB
<b>Transmissivity</b>	43%
<b>Viewing Angle (typical)</b>	178° H,V
<b>Contrast Ratio (typical)</b>	>10 0 k :1
<b>Response Time (typical)</b>	<1 ms
<b>Palette</b>	1.073 billion colors (10-bit)
<b>Product size</b>	604 * 1709 (mm)
<b>Weight (package)</b>	35 KG/55KG 77 lbs/ 121 lbs
<b>Power Requirements</b>	100 to 240V AC
<b>Power Consumption</b>	<90W

# FOTOVECI

FTVC-O55-PTG6-1X2  
55inch 1X2 Video wall  
OLED

---

- ▶ *2 x 55" Size*
  - ▶ *Full HD Resolution (1920 x 2160)*
  - ▶ *43% light transmissivity*
  - ▶ *Sleek Aluminum Alloy Frame Design*
- 



## Product Highlights.

1x2 55-Inch OLED Video Wall Setup: The O55-PTG6-1X2 features a unique 1x2 setup, consisting of two 55-inch transparent OLED panels seamlessly combined to create a larger display area. This configuration not only maximizes the use of space but also enhances the visual continuity across the screens, creating a singular, expansive canvas for displaying content.



# F O T O V E C i

## Specifications

Model	O55-PTG6-1X2
<i>Size</i>	2 x 55"
<i>Display Resolution</i>	1920 x 2160
<i>Max Luminance</i>	600 cd/m <sup>2</sup>
<i>Basic Display Interface</i>	HDMI x1, Display Port x1
<i>Touch Option</i>	Capacitive touch, RS-232, USB
<i>Transmissivity</i>	43%
<i>Viewing Angle(typical)</i>	178° H,V
<i>Contrast Ratio(typical)</i>	>15 0 k :1
<i>Response Time(typical)</i>	<1 ms
<i>Palette</i>	1.073 billion colors (10-bit)
<i>Product size</i>	1263*404*1915.1(mm)
<i>Weight(package)</i>	TBD
<i>Power Requirements</i>	100 to 240V AC
<i>Power Consumption</i>	<380W



# F O T O V E C I

## FTVC-O55-STP6 55-Inch Premium Auto-Lift OLED Display

- ▶ *55" Size*
- ▶ *Full HD Resolution (1920 x 1080)*
- ▶ *43% light transmissivity*
- ▶ *Automated Lifting Mechanism*



### Product Highlights.

Automated Lifting Mechanism: At the heart of the O55-STP6's design is its automated lifting mechanism, which allows the screen to be smoothly raised or lowered with the touch of a button. This feature not only adds a dramatic flair to presentations and displays but also offers practical benefits in terms of space management and device protection. When not in use, the screen can be retracted into its base, minimizing its physical footprint and safeguarding the screen from potential damage.



# F O T O V E C i

## Specifications

Model	O55-STP6
Size	55"
Display Resolution	Full HD (1920 x 1080)
Max Luminance	600 cd/m <sup>2</sup>
Basic Display Interface	HDMI x1, Display Port x1
Touch Option	Capacitive touch, RS-232, USB
Transmissivity	43%
Viewing Angle(typical)	178° H,V
Contrast Ratio(typical)	>10 0 k :1
Response Time(typical)	<1 ms
Palette	1.073 billion colors (10-bit)
Product size	1390*300*1050(mm)
Weight(package)	81.5 kg (179.3 lbs)
Power Requirements	100 to 240V AC
Power Consumption	<190W

# FOTOVECI

## FTVC-O55-LTP6-R 55-Inch Transparent OLED Display for Real Estate Showcasing

---

- ▶ *55" Size*
  - ▶ *Full HD Resolution (1920 x 1080)*
  - ▶ *43% light transmissivity*
  - ▶ *Tailored for Real Estate Scale Models*
- 



### **Product Highlights.**

The "55-Inch Transparent OLED Display for Real Estate Showcasing" (Model: O55-LTP6-R) is a groundbreaking solution designed specifically for the dynamic needs of the real estate industry. Its innovative features enhance the presentation of scale models and architectural designs, offering a captivating and interactive way to visualize future projects. This product integrates cutting-edge technology with a sophisticated design to create an immersive viewing experience for potential clients. Product Highlights and investors.



# F O T O V E C I

## Specifications

Model	O55-LTP6-R
<i>Size</i>	55"
<i>Display Resolution</i>	Full HD (1920 x 1080)
<i>Max Luminance</i>	600 cd/m <sup>2</sup>
<i>Basic Display Interface</i>	HDMI x1, Display Port x1
<i>Touch Option</i>	Capacitive touch, RS-232, USB
<i>Transmissivity</i>	43%
<i>Viewing Angle(typical)</i>	178° H,V
<i>Contrast Ratio(typical)</i>	>10 0 k :1
<i>Response Time(typical)</i>	<1 ms
<i>Palette</i>	1.073 billion colors (10-bit)
<i>Product size</i>	1303*1636.13*691.5(mm)
<i>Weight(package)</i>	81.5 kg (179.3 lbs)
<i>Power Requirements</i>	100 to 240V AC
<i>Power Consumption</i>	<190W

# FOTOVECI

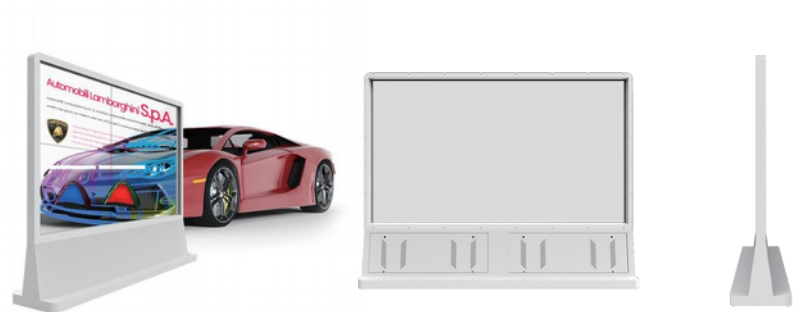
FTVC-O55-PTG6-2X2  
55inch 2X2 Video wall OLED

- ▶ 4 x 55" Size
- ▶ Full HD Resolution (3840 x 2160)
- ▶ 43% light transmissivity
- ▶ Ultra-Narrow Bezel Design



## Product Highlights.

55-Inch 2x2 Seamless Transparent OLED Video Wall: Ultra-Clear, Space-Saving Design (Model: O55-PTG6-2X2) stands at the forefront of display technology, embodying the perfect blend of aesthetic minimalism and high-performance functionality. Designed to captivate and impress, this video wall is an ideal solution for premium retail locations, corporate headquarters, and any space where visual communication is paramount.



# F O T O V E C i

## Specifications

<b>Model</b>	O55-PTG6-2X2
<b>Size</b>	4 x 55"
<b>Display Resolution</b>	UHD (3840 x 2160)
<b>Max Luminance</b>	600 cd/m <sup>2</sup>
<b>Basic Display Interface</b>	HDMI x1, Display Port x1
<b>Touch Option</b>	Capacitive touch, RS-232, USB
<b>Transmissivity</b>	43%
<b>Viewing Angle (typical)</b>	178° H,V
<b>Contrast Ratio (typical)</b>	>10 0 k :1
<b>Response Time (typical)</b>	<1 ms
<b>Palette</b>	1.073 billion colors (10-bit)
<b>Product size</b>	2557*2000*500(mm)
<b>Weight (package)</b>	TBD
<b>Power Requirements</b>	100 to 240V AC
<b>Power Consumption</b>	<760W

# F O T O V E C I

FTVC-O55-ZTP2-Y 55-Inch  
Transparent OLED Display with Y-  
Type Desktop Stand

---

- ▶ *55" Size*
  - ▶ *Full HD Resolution (1920 x 1080)*
  - ▶ *43% light transmissivity*
  - ▶ *Y-Type Desktop stand*
- 



## Product Highlights.

The "55-Inch Transparent OLED Display with Y-Type Desktop Stand" (Model: O55-ZTP2-Y) represents a significant advancement in display technology, blending aesthetic appeal with cutting-edge functionality. Designed to captivate and inspire, this display is an exemplary choice for those looking to elevate the ambiance of their modern interiors and Product Highlights workspaces.



# F O T O V E C i

## Specifications

Model	O55-ZTP2-Y
Size	55"
Display Resolution	Full HD (1920 x 1080)
Max Luminance	600 cd/m <sup>2</sup>
Basic Display Interface	HDMI x1, Display Port x1
Touch Option	Capacitive touch, RS-232, USB
Transmissivity	43%
Viewing Angle (typical)	178° H,V
Contrast Ratio (typical)	>10 0 k :1
Response Time (typical)	<1 ms
Palette	1.073 billion colors (10-bit)
Product size	1237.5 * 826.4 * 214 (mm)
Weight (package)	34kg/50kg 74.8lbs / 110 lbs
Power Requirements	100 to 240V AC
Power Consumption	<190W

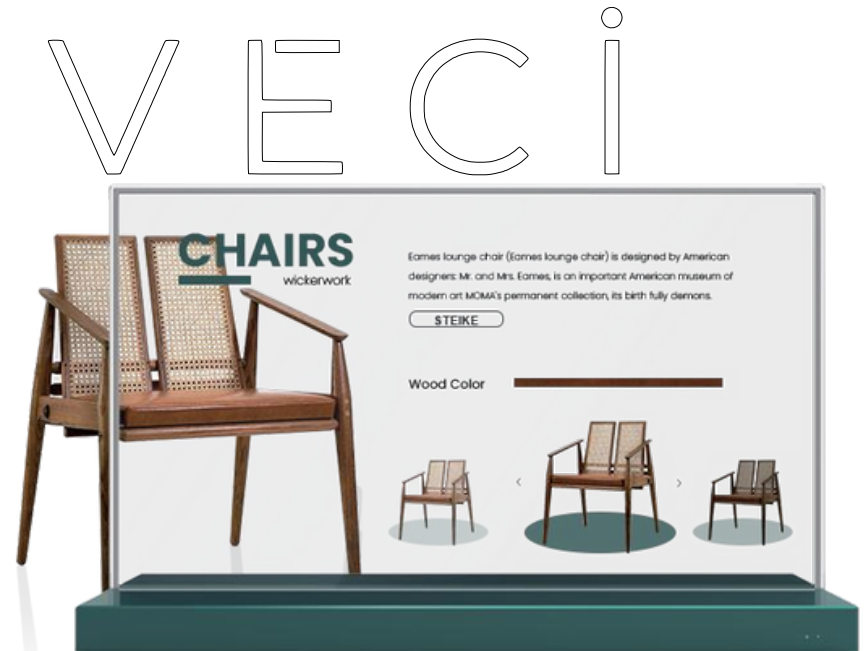


# F O T O V E C I

## FTVC-O30-QTP6 30-Inch Transparent OLED Video Wall Display

---

- ▶ *30" Size Resolution*
  - ▶ *(1366 x 768) 43% light*
  - ▶ *transmissivity Video*
  - ▶ *wall design*
- 



### Product Highlights.

1. "30-Inch Video Wall with Flexible N x 1 Configuration" - This highlights the product's adaptable design, allowing for versatile installation setups to suit different space requirements and visual impact goals. 2. "Versatile Design Applications" - Emphasizes the product's flexibility in design, making it suitable for a wide range of applications and environments, enhancing aesthetic appeal and functionality.



# FOTOVECI

## Specifications

Model	O30-QTP6
<i>Size</i>	30"
<i>Display Resolution</i>	1366 x 768
<i>Max Luminance</i>	600 cd/m <sup>2</sup>
<i>Basic Display Interface</i>	HDMI x1, Display Port x1
<i>Touch Option</i>	Capacitive touch, RS-232, USB
<i>Transmissivity</i>	43%
<i>Viewing Angle (typical)</i>	178° H,V
<i>Contrast Ratio (typical)</i>	>10 0 k :1
<i>Response Time (typical)</i>	<1 ms
<i>Palette</i>	1.073 billion colors (10-bit)
<i>Product size</i>	681*424*147(mm)
<i>Weight (package)</i>	6kg/15KG 8.8lbs/33 lbs
<i>Power Requirements</i>	100 to 240V AC
<i>Power Consumption</i>	<90W

# F O T O V E C I

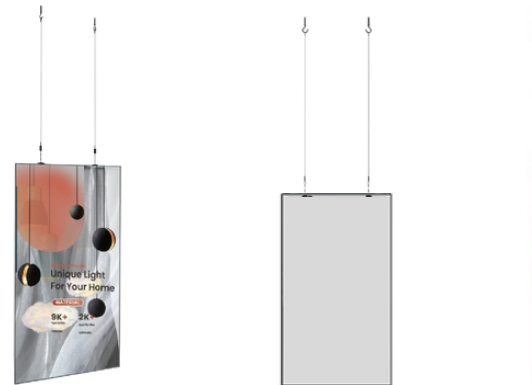
FTVC-O55-DRS6 55in ceiling  
mount curvable OLED

---

- ▶ *55" Size*
  - ▶ *4K Resolution (3840 x 2160)*
  - ▶ *Curvable OLED (non-transparency)*
  - ▶ *Ceiling mount or tiled installation*
- 

## Product Highlights.

Unlike traditional flat screens, the **CS-O55-DRS6** boasts a gently curved design that mimics the natural curvature of the human eye. This ingenious feature ensures every point on the screen is at an equal distance from your eyes, reducing eye strain and creating a truly panoramic viewing experience. Whether you're watching a fast-paced action movie or engrossed in a detailed documentary, the curve ensures a uniform and captivating view from edge to edge.



# F O T O V E C i

## Specifications

Model	O55-DRS6
Size	55"
Display Resolution	4K (3840 x 2160)
Max Luminance	600 cd/m <sup>2</sup>
Basic Display Interface	HDMI x1, Display Port x1
Touch Option	Capacitive touch, RS-232, USB
Transmissivity	Non
Viewing Angle(typical)	178° H,V
Contrast Ratio(typical)	>10 0 k :1
Response Time(typical)	<1 ms
Palette	1.073 billion colors (10-bit)
Product size	1781*700.54*14(mm)
Weight(package)	16.5kg /20KG 36.38lbs/44.1lbs
Power Requirements	100 to 240V AC
Power Consumption	<380W

# FOTOVECI

## FTVC-O30-STP6 30-Inch Premium Auto-Lift OLED Display

- ▶ *30" Size*
- ▶ *Resolution 1366 x 768*
- ▶ *43% light transmissivity*
- ▶ *Floor standing or integrated*



### Product Highlights.

30-Inch Premium Auto-Lift OLED Display with a resolution of 1366 x 768, designed for exceptional clarity and vibrant visuals. Perfect for dynamic commercial pres.



# F O T O V E C i

## Specifications

Model	O30-STP6
<i>Size</i>	30"
<i>Display Resolution</i>	1366 x 768
<i>Max Luminance</i>	600 cd/m <sup>2</sup>
<i>Basic Display Interface</i>	HDMI x1, Display Port x1
<i>Touch Option</i>	Capacitive touch, RS-232, USB
<i>Transmissivity</i>	43%
<i>Viewing Angle(typical)</i>	178° H,V
<i>Contrast Ratio(typical)</i>	>10 0 k :1
<i>Response Time(typical)</i>	<1 ms
<i>Palette</i>	1.073 billion colors (10-bit)
<i>Product size</i>	1234*760*80(mm)
<i>Weight(package)</i>	20KG/25KG 40.1lbs/55.1lbs
<i>Power Requirements</i>	100 to 240V AC
<i>Power Consumption</i>	<15 0 W

# FOTOVECI

## FTVC-O55-WTG2 55-Inch Transparent OLED Display for Museums

---

- ▶ *55" Size*
  - ▶ *Full HD Resolution (1920 x 1080)*
  - ▶ *43% light transmissivity*
  - ▶ *High Brightness 600 cd/m<sup>2</sup> OLED Panel*
- 



### Product Highlights.

Premium Artifact Display Cabinet: The O55-WTG2 is designed not just as a display but as a premium artifact display cabinet that redefines the museum experience. This integration of a 55-inch transparent OLED display into a cabinet allows artifacts to be viewed in unprecedented clarity and detail. The crystal-clear visibility afforded by the OLED technology means that every nuance of an artifact is visible, from the subtle textures of ancient pottery to the fine brushstrokes on historic manuscripts.



# F O T O V E C I

## Specifications

<b>Model</b>	O55-WTG2
<b>Size</b>	55"
<b>Display Resolution</b>	Full HD (1920 x 1080)
<b>Max Luminance</b>	600 cd/m <sup>2</sup>
<b>Basic Display Interface</b>	HDMI x1, Display Port x1
<b>Touch Option</b>	Capacitive touch, RS-232, USB
<b>Transmissivity</b>	43%
<b>Viewing Angle (typical)</b>	178° H,V
<b>Contrast Ratio (typical)</b>	>10 0 0 :1
<b>Response Time (typical)</b>	<1 ms
<b>Palette</b>	1.073 billion colors (10-bit)
<b>Product size</b>	2002*810*810(mm)
<b>Weight (package)</b>	TBD
<b>Power Requirements</b>	100 to 240V AC
<b>Power Consumption</b>	<190W



# F O T O V E E C I

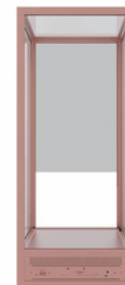
## FTVC-O30-LTGA 30-Inch OLED transparent display cabinet

- ▶ *30" Size*
- ▶ *Resolution 1366 x 768*
- ▶ *43% light transmissivity*
- ▶ *Floor standing or integrated*



### **Product Highlights.**

30-Inch Transparent Display Cabinet, The 30-inch OLED transparent display case not only meets consumers' dual demands for technology and aesthetics, but through its revolutionary design, imbues the presentation of luxury goods with an even more dreamlike allure. Without a doubt, this product will become the new benchmark for luxury retail experiences, injecting the industry with fresh vitality.



# FOTOVECI

## Specifications

Model	CS-O30-LTGA
<i>Size</i>	30"
<i>Display Resolution</i>	768 x 1366
<i>Max Luminance</i>	600 cd/m <sup>2</sup>
<i>Basic Display Interface</i>	HDMI-IN*1,DP-IN*1
<i>Touch Option</i>	USB*1.RS232*2
<i>Transmissivity</i>	43%
<i>Viewing Angle(typical)</i>	178° H,V
<i>Contrast Ratio(typical)</i>	>10 0 k :1
<i>Response Time(typical)</i>	<1 ms
<i>Palette</i>	1.073 billion colors (10-bit)
<i>Product size</i>	1095*450*450(mm)
<i>Weight(package)</i>	81.0kg(178.5lbs )
<i>Power Requirements</i>	100 to 240V AC
<i>Power Consumption</i>	<90W

# F O T O V E E



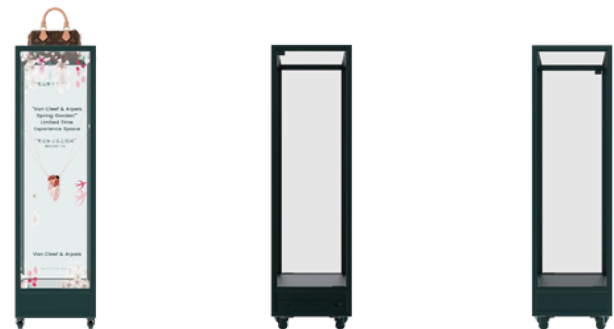
## FTVC-O48-LTGA 48 inch Stretched OLED Cabinet

---

- ▶ *48" Size*
  - ▶ *Full HD Resolution (540 x 1920)*
  - ▶ *43% light transmissivity*
  - ▶ *Floor standing or tiled installation*
- 

### **Product Highlights.**

48-Inch Stretched OLED Cabinet featuring a resolution of 540 x 1920, tailored for elongated display solutions in retail and public spaces. Offers superior image quality and a sleek design, ideal for engaging advertisements and information dissemination.



# FOTOVECI

## Specifications

Model	O48-LTGA
<i>Size</i>	48"
<i>Display Resolution</i>	540 x 1920
<i>Max Luminance</i>	400 cd/m <sup>2</sup>
<i>Basic Display Interface</i>	HDMI x1, Display Port x1
<i>Touch Option</i>	Capacitive touch, RS-232, USB
<i>Transmissivity</i>	43%
<i>Viewing Angle(typical)</i>	178° H,V
<i>Contrast Ratio(typical)</i>	>10 0 k :1
<i>Response Time(typical)</i>	<1 ms
<i>Palette</i>	1.073 billion colors (10-bit)
<i>Product size</i>	1474*418*418(mm)
<i>Weight(package)</i>	45KG/50KG 99.2lbs/110.2lbs
<i>Power Requirements</i>	100 to 240V AC
<i>Power Consumption</i>	<190W

# FOTOVECI

## FTVC-O30-LTGA 30 inch Transparent OLED Screen High-end Red Wine Wooden Desk Display

---

- ▶ *30" Size*
  - ▶ *Resolution 1366 x 768*
  - ▶ *43% light transmissivity*
  - ▶ *Floor standing or integrated*
- 

### Product Highlights.

30 inch Transparent OLED Showcase : This transparent display case powered by advanced OLED technology imbues rare vintages of wine with an unprecedented artistic quality. Unlike traditional enclosed displays, its ultra-slim frames and seamless glass create a dreamlike, almost levitating effect for each bottle.



# F O T O V E C i

## Specifications

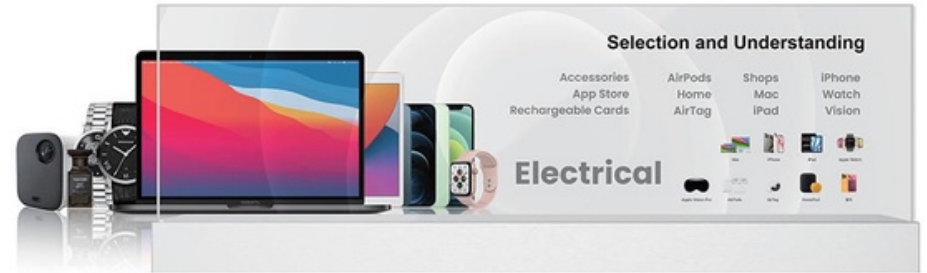
Model	CS-O30-LTGA
<i>Size</i>	30" / 27"
<i>Display Resolution</i>	30 inch OLED: 1366 x 768 / 27 inch LCD: 1920 x 1080
<i>Max Luminance</i>	30 inch OLED: 600 cd/m <sup>2</sup> / 27 inch LCD: 300cd/m <sup>2</sup>
<i>Basic Display Interface</i>	30 inch OLED: HDMIx1
<i>Touch Option</i>	30 inch OLED: USBx2, RJ45x1, TOUCH USBx1 / 27 inch LCD: USBx2, RJ45x1
<i>Transmissivity</i>	30 inch OLED: 43%
<i>Viewing Angle(typical)</i>	178° H,V
<i>Contrast Ratio(typical)</i>	30 inch OLED: >150k:1 / 27 inch LCD: >1000:1
<i>Response Time(typical)</i>	30 inch OLED: <1 ms / 27 inch LCD: <8ms
<i>Palette</i>	30 inch OLED: 1.073 billion colors (10-bit) / 27 inch LCD: 8-bit 16.7M
<i>Product size</i>	812*438*1384(mm)
<i>Weight(package)</i>	89.0kg(196.2lbs)
<i>Power Requirements</i>	100 to 240V AC
<i>Power Consumption</i>	<180W

# FOTOVECI

## FTVC-O48-QTP6 48-Inch Transparent OLED Desktop Embedded Display

---

- ▶ *48" Size*
  - ▶ *resolution (1920 x 540)*
  - ▶ *43% light transmissivity*
  - ▶ *Embedded Design*
- 



### **Product Highlights.**

Designed for desktops, the 48" OLED Desktop Embedded Transparent Screen can be easily embedded in a desktop or desktop stand for seamless integration. This type of installation not only saves space, but also makes the screen more coherent and unified with the surrounding environment, enhancing the overall aesthetics.



# FOTOVOVE Ci

## Specifications

Model	
<i>Size</i>	48"
<i>Display Resolution</i>	Full HD (1920 x 540)
<i>Max Luminance</i>	600 cd/m <sup>2</sup>
<i>Basic Display Interface</i>	HDMI*1+DP*1+RS232*2
<i>Touch Option</i>	RS-232*2,Capacitive touch USB*1 + USB 2.0*1
<i>Transmissivity</i>	43%
<i>Viewing Angle(typical)</i>	178° H,V
<i>Contrast Ratio(typical)</i>	>150k:1
<i>Response Time(typical)</i>	<1 ms
<i>Palette</i>	1.073 billion colors (10-bit)
<i>Product size</i>	1203.3*218.6*421.3(mm)
<i>Weight(package)</i>	TBD
<i>Power Requirements</i>	100 to 240V AC
<i>Power Consumption</i>	<200W

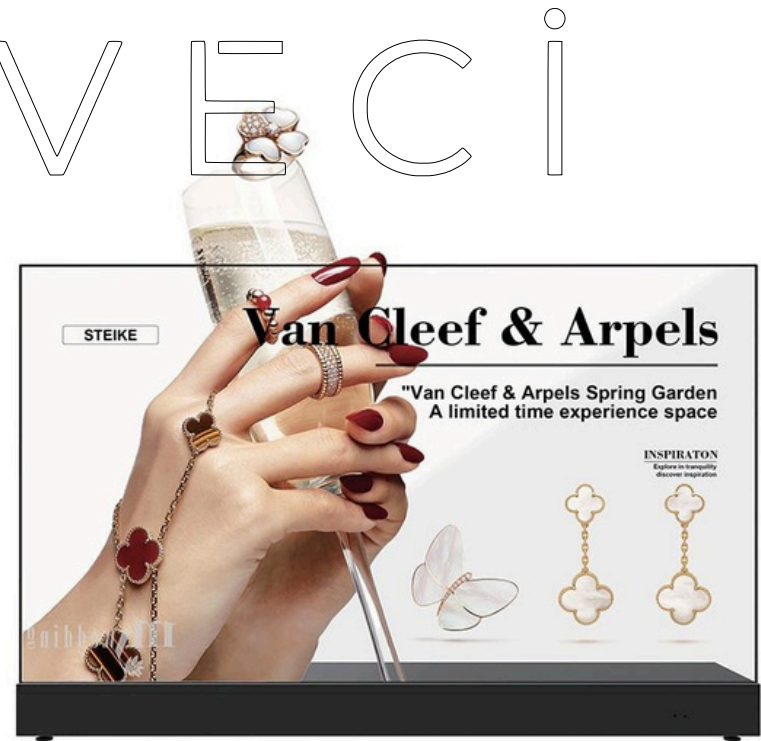


# FOTOVECI

## FTVC-O77-QTGA 77-Inch Transparent OLED Desktop Embedded Display

---

- ▶ 77" Size
  - ▶ Resolution (3840 x 2160)
  - ▶ 43% light transmissivity
  - ▶ Embedded Design
- 



### Product Highlights.

In today's age of ultimate visual experience and luxury, the 77" OLED Desktop Embedded Transparency Screen is a perfect example of the fusion of technology and art. OLED screens are known for their excellent colour representation and high contrast ratio. In the screen display, the details of a woman's hand, the shine of red nail polish, and the colour of jewellery set on a wine glass are all perfectly reproduced on the screen.



# FOTOVECI

## Specifications

Model	O77-QTGA
<i>Size</i>	77"
<i>Display Resolution</i>	Full HD (3840 x 2160)
<i>Max Luminance</i>	600 cd/m <sup>2</sup>
<i>Basic Display Interface</i>	HDMI-IN*2
<i>Touch Option</i>	Capacitive touch, RJ45*1+USB 2.0*1+USB 3.0*1
<i>Transmissivity</i>	43%
<i>Viewing Angle(typical)</i>	178° H,V
<i>Contrast Ratio(typical)</i>	>150k:1
<i>Response Time(typical)</i>	<1 ms
<i>Palette</i>	1.073 billion colors (10-bit)
<i>Product size</i>	1713.26*360*1112.5(mm)
<i>Weight(package)</i>	TBD
<i>Power Requirements</i>	100 to 240V AC
<i>Power Consumption</i>	<480W

# FOTOVECI

## FTVC-O30-ZTP6 30 Inch Transparent Touchscreen Desktop Display

---

- ▶ 30" Size
  - ▶ Resolution (1366 x 768)
  - ▶ 43% light transmissivity
  - ▶ G+F+F
- 



### Product Highlights.

A 30-inch transparent touchscreen desktop monitor that combines advanced interactive technology with a compact, transparent design. The monitor is designed to provide an engaging user experience while fitting into space-constrained installations.



# F O T O V E C I

## Specifications

<b>Model</b>	O30-ZTP6
<b>Size</b>	30"
<b>Display Resolution</b>	1366 x 768
<b>Max Luminance</b>	600 cd/m <sup>2</sup>
<b>Basic Display Interface</b>	HDMI x1, Display Port x1
<b>Touch Option</b>	Capacitive touch, RS-232, USB
<b>Transmissivity</b>	43%
<b>Viewing Angle (typical)</b>	178° H,V
<b>Contrast Ratio (typical)</b>	>100k:1
<b>Response Time (typical)</b>	<1 ms
<b>Palette</b>	1.073 billion colors (10-bit)
<b>Product size</b>	686.1 * 533.8 * 44 (mm)
<b>Weight (package)</b>	6kg/8Kg 8.8lbs/17.6lbs
<b>Power Requirements</b>	100 to 240V AC
<b>Power Consumption</b>	<90W

# F O T O V E C I

## FTVC-055-QTP6 55inch L Open Cell Transparent OLED Display

---

- ▶ *55" Size*
  - ▶ *Resolution (1920 x 1080)*
  - ▶ *43% light transmissivity*
  - ▶ *Open Hole Design*
- 

### Product Highlights.

The 55-inch transparent OLED display blends seamlessly into modern environments while providing an unrivalled viewing experience. Combining the best of OLED technology with a transparent design, this display offers a unique transparent design that uniquely combines a unique blend of visual quality and aesthetics.



# F O T O V E C i

## Specifications

<b>Model</b>	CS-O55-QTP6
<b>Size</b>	55"
<b>Display Resolution</b>	Full HD (1920 x 1080)
<b>Max Luminance</b>	600 cd/m <sup>2</sup>
<b>Basic Display Interface</b>	HDMI x1, Display Port x1
<b>Touch Option</b>	Capacitive touch, RS-232, USB
<b>Transmissivity</b>	43%
<b>Viewing Angle (typical)</b>	178° H,V
<b>Contrast Ratio (typical)</b>	>100k:1
<b>Response Time (typical)</b>	<1 ms
<b>Palette</b>	1.073 billion colors (10-bit)
<b>Product size</b>	1237.5*774*220(mm)
<b>Weight (package)</b>	35/43KG 77.1lbs/94.7lbs
<b>Power Requirements</b>	100 to 240V AC
<b>Power Consumption</b>	<190W

# F O T O V E C I

## FTVC-O30-LTPX 30inch OLED\_T Mobile AI Transparent Display Device

---

- ▶ *30" Size*
  - ▶ *Resolution (1366 x 768)*
  - ▶ *43% light transmissivity*
  - ▶ *Slide Design*
- 



### **Product Highlights.**

The OLED\_T Mobile AI Transparent Coffee Maker features a modern and minimalist design with smooth lines and elegant shapes overall. Its unique OLED transparent display, intelligent AI control, mobile portability, modern minimalist design and high energy efficiency bring users a convenient, efficient and personalised coffee experience, and demonstrate the perfect combination of technology and aesthetics.



# F O T O V E C i

## Specifications

Model	O30-LTPX
<b>Size</b>	30"
<b>Display Resolution</b>	Full HD (1366 x 768)
<b>Max Luminance</b>	600 cd/m <sup>2</sup>
<b>Basic Display Interface</b>	HDMI x1, Display Port x1
<b>Touch Option</b>	Capacitive touch, RS-232, USB, LAN
<b>Transmissivity</b>	43%
<b>Viewing Angle(typical)</b>	178° H,V
<b>Contrast Ratio(typical)</b>	>100k:1
<b>Response Time(typical)</b>	<1 ms
<b>Palette</b>	1.073 billion colors (10-bit)
<b>Product size</b>	1750*500*500(mm)
<b>Weight(package)</b>	115KG/130KG 263.5lbs/286.6lbs
<b>Power Requirements</b>	100 to 240V AC
<b>Power Consumption</b>	<150W



# FOTOVECI

FTVC-030-MTP6 FTVC-055-MTP6  
30/55 Inch OLED Module  
Transparent Display

---

- ▶ *30/55" Size*
  - ▶ *Resolution (1366 x 768) (1920 x 1080)*
  - ▶ *43% light transmissivity*
  - ▶ *Multi-Combination*
- 

## Product Highlights.

The high transparency and ultra-thin design of OLED module transparent displays make them outstanding in a variety of application scenarios. For example, it is used in retail shops to display products and show product information; in museums or art exhibitions, it can be used to display artwork or artefacts to enhance the viewing experience; and in public transport, such as subways or buses, it can be used to broadcast advertisements or information.



# F O T O V E C I

## Specifications

Model	030-MTP6	055-MTP6
<i>Size</i>	30"	55"
<i>Display Resolution</i>	Full HD (1366 x 768 1920 x 1080)	
<i>Max Luminance</i>	600 cd/m <sup>2</sup>	
<i>Basic Display Interface</i>	HDMI x1, Display Port x1	
<i>Touch Option</i>	Capacitive touch, RS-232, USB	
<i>Transmissivity</i>	43%	
<i>Viewing Angle(typical)</i>	178° H,V	
<i>Contrast Ratio(typical)</i>	>100k:1	
<i>Response Time(typical)</i>	<1 ms	
<i>Palette</i>	1.073 billion colors (10-bit)	
<i>Product size</i>	680* 454 * 10.5(mm )	1225.5* 765 * 10.5(mm )
<i>Weight(package)</i>	TBD	
<i>Power Requirements</i>	100 to 240V AC	
<i>Power Consumption</i>	<190W / <90W	

# F O T O V E C I

## FTVC-L21-MZXX 21 Inch LCD Double-sided Transparent Display Device

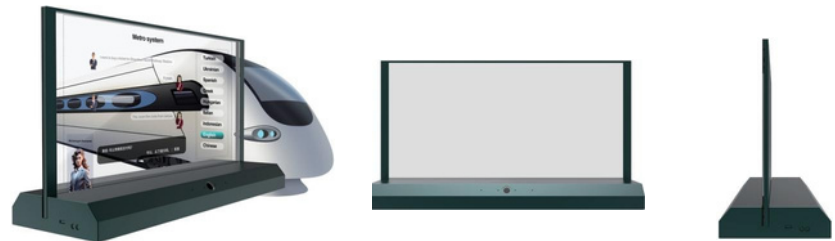
---

- ▶ *20.8" Size*
  - ▶ *Resolution (1280 x 720)*
  - ▶ *Embedded Design*
- 



### Product Highlights.

The most notable feature of the LCD double-sided transparent display device is its double-sided display capability. Not only does the front of the device (facing the passenger) clearly display information about the metro system, including multiple language options, ticketing and enquiry functions, but the back of the device (although not shown directly in the image) also displays the content independently, enabling two-way transmission and interaction of information.



# F O T O V E C i

## Specifications

<b>Model</b>	L21-MZXX
<b>Size</b>	20.8"
<b>Display Resolution</b>	Full HD (1280 x 720)
<b>Max Luminance</b>	600 cd/m <sup>2</sup>
<b>Basic Display Interface</b>	USB *1+HDMI*1+typ1-c*1
<b>Touch Option</b>	Android II
<b>Transmissivity</b>	TBD
<b>Viewing Angle(typical)</b>	178° H,V
<b>Contrast Ratio(typical)</b>	30:1
<b>Response Time(typical)</b>	<1 ms
<b>Palette</b>	1.073 billion colors (10-bit)
<b>Product size</b>	564*315*180(mm)
<b>Weight(package)</b>	TBD
<b>Power Requirements</b>	DC 20V
<b>Power Consumption</b>	<40W